

## Air Bleed Valves Automatic Shut Off Valves

Max. Pressure 21 MPa

### Air Bleed Valve

AVT-03

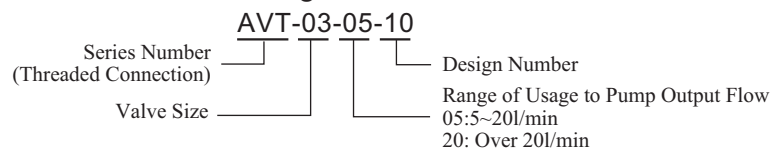


This valve is designed to use when a pump starts to bleed off the air which is enclosed in a suction line or another line in the system. The valve can also be used to bleed off the air in the large cylinders.

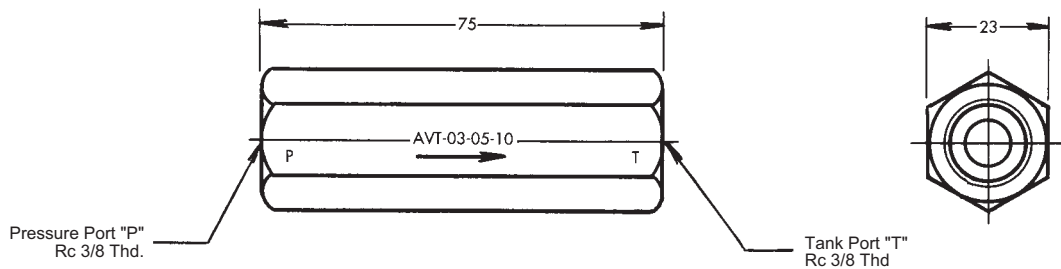
### Specifications

Model No.	Closing Pressure	Cracking Pressure	Mass
AVT-03-※10	0.15 MPa (1.5 kgf/cm <sup>2</sup> )	0.38 MPa (3.9 kgf/cm <sup>2</sup> )	0.2kg

### Model Number Designation



### Graphic Symbol



◎Tank port should be located under the oil level in the reservoir.

### Automatic Shut Off Valve

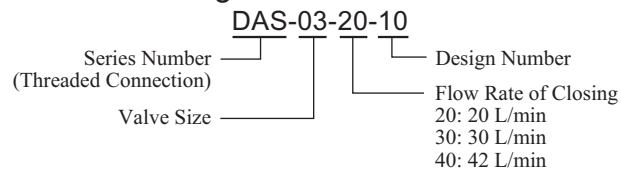
DAS-03



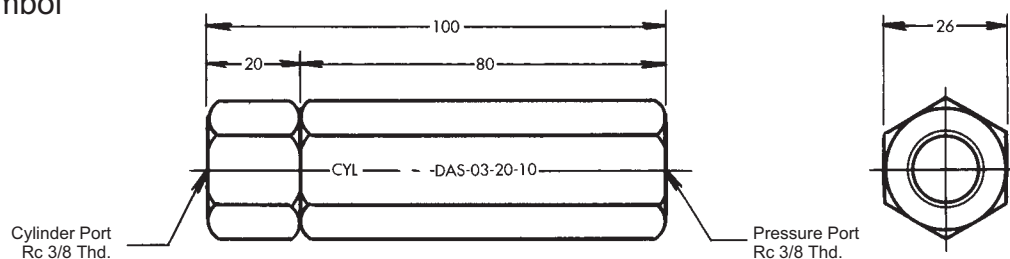
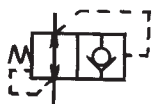
### Specifications

Model No.	Closing Flow L/min	Adapted Flow L/min	Min. Operating Pressure MPa★3 ( kgf/cm <sup>2</sup> )	Mass kg
DAS-03-20-10	20	10~13	0.5 (5.1)	0.4
DAS-03-30-10	30	15~20	0.9 (9.2)	
DAS-03-40-10	42	21~28	0.9 (9.2)	

### Model Number Designation



### Graphic Symbol



◎Instructions:

1. In selecting the valve, closing flow must be 1.5 times higher than the required flow for cylinders.
2. The Valve does not operate at a small flow rate.
- ★3. The figure in the table shows the minimum pressure which can keep the closing condition.